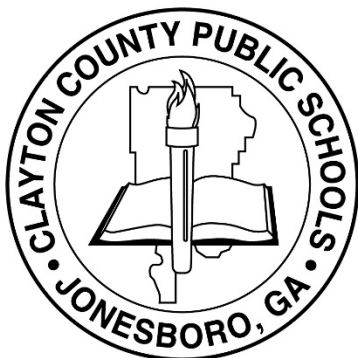


2019-2020

# School Choice Guide



## Which Door Will You Choose?



Clayton County Public Schools  
Committed to High Performance

2019-2020

**Note:** Information and programs listed are as of date printed. Changes may have occurred. Please visit [www.clayton.k12.ga.us/departments/school\\_choice](http://www.clayton.k12.ga.us/departments/school_choice) for the most up-to-date program information.

## **Vision Statement**

The vision of Clayton County Public Schools is to be a district of high performance preparing ALL students to live and compete successfully in a global society.

## **Mission Statement**

The mission of Clayton County Public Schools is to empower students to achieve academic and personal goals.

## **School Board Members**

Pam Adamson, Ed.D., Chair  
Alieka Anderson, Ed.D., Vice Chair  
Mary Baker  
Ophelia Burroughs  
Mark Christmas  
Jessie Goree  
Judy Johnson  
Benjamin Straker  
Victoria Williams

## **Superintendent of Schools**

Morcease J. Beasley, Ed.D.



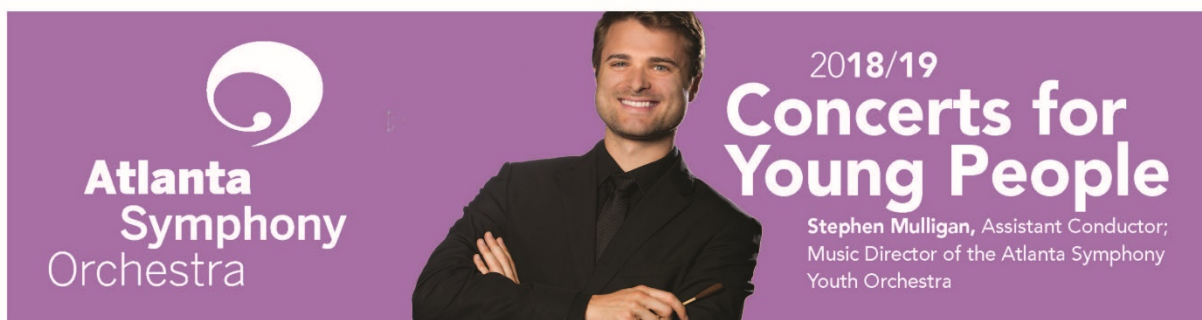
## You can find

 Clayton County Public Schools

## in the app store.







GRADES PreK-2

### Young Person's Guide to the Orchestra

Featuring the Atlanta Symphony Orchestra  
Stephen Mulligan, Conductor  
Approximately 45 minutes

Two shows per day at 10:00am and 11:30am

MAR 8 | 2019 | Fri

MAR 12 | 2019 | Tue

MAR 15 | 2019 | Fri†

Composer Benjamin Britten takes young people on a tour of the instruments of the orchestra with this definitive music education symphony. This piece was written at the request of the British Ministry of Education to be included in an educational documentary in 1946. This a wonderful introduction to the orchestra for our youngest students. We invite you to experience each section of the orchestra while exposing your students to the world class musicianship of the Atlanta Symphony Orchestra!

†Location TBA One Show at 10:30am



GRADES 3-6

### Heroes of the Orchestra

Featuring the Atlanta Symphony Orchestra  
Stephen Mulligan, Conductor  
Approximately 50 minutes

Two shows per day at 10:15am and 11:45am

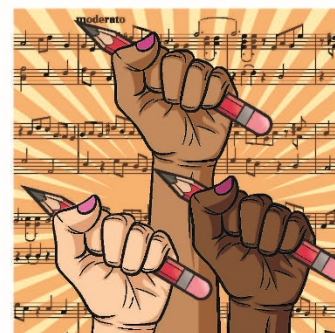
OCT 16 | 2018 | Tue

OCT 17 | 2018 | Wed

OCT 18 | 2018 | Thu

NOV 6 | 2018 | Tue

This concert will introduce young audiences to the orchestra through an exploration of music inspired by history's heroes, mythological heroes, and the everyday heroes in our student's lives. The Atlanta Symphony Orchestra and Maestro Mulligan will feature pieces like Aaron Copland's *Lincoln Portrait*, Beethoven's *Prometheus*, and James Weldon Johnson's, *Lift Every Voice and Sing*. We invite all students attending this concert to submit a short paragraph/essay describing a hero in your life. The best essays will win an opportunity to read your essay on the Atlanta Symphony Hall stage during your Concert for Young People field trip date. More details to come...



GRADES 7-12

### She Composes!

Featuring the Atlanta Symphony Orchestra  
Stephen Mulligan, Conductor  
Approximately 50 minutes

Two shows per day at 10:15am and 11:45am

FEB 6 | 2019 | Wed

FEB 7 | 2019 | Thu

FEB 8 | 2019 | Fri

Maestro Mulligan and the Atlanta Symphony Orchestra Education Department is thrilled to present a first for our Concerts for Young People series...an ALL FEMALE COMPOSER CONCERT! This concert will introduce students to some of the unsung sheroes of classical music. Maestro Mulligan will kick off the concert with Clara Schumann and her Piano Concerto, Op. 7. Students will also experience Fanny Mendelssohn Hensel's Overture in C major and Amy Beach's Symphony No. 2. This is just a peek into this exciting first-time event. More pieces and details to be announced...

*All concerts in Atlanta Symphony Hall unless noted otherwise.*

To book your reservation, contact **TIFFANY JONES** at [tiffany.jones@atlantasymphony.org](mailto:tiffany.jones@atlantasymphony.org) or call **404.733.5034** for more information. Book online at [www.aso.org/fieldtrips](http://www.aso.org/fieldtrips)

Advance Reservation: **\$8** | General Ticket: **\$10** | Title I Tickets: **\$6.50**

\*Grant Subsidies Available for Qualifying Schools (Please indicate your request for grant subsidies on your reservation application)

If you are booking multiple dates, please make a separate reservation for each date.

# Table of Contents

<b>Eligibility Criteria .....</b>	<b>7</b>
<b>Student Transportation.....</b>	<b>12</b>
<b>Choice Pre-K and Elementary School Programs (Grades K-5).....</b>	<b>12</b>
<b>Choice Middle School Programs (Grades 6-8) .....</b>	<b>13</b>
<b>Choice High School Programs (Grades 9-12) .....</b>	<b>14</b>
<b>K-12 Pathways for School Choice/Magnet Themes .....</b>	<b>14</b>
<b>Pre-K and Elementary School Programs .....</b>	<b>15</b>
<b>Middle School Programs.....</b>	<b>17</b>
<b>High School Programs .....</b>	<b>19</b>
<b>General Information – Magnet Programs and School Choice .....</b>	<b>21</b>
<b>Non-Resident Students .....</b>	<b>23</b>
<b>Applying Online.....</b>	<b>24</b>
<b>Pre-Kindergarten Registration .....</b>	<b>25</b>
<b>Student Transfers .....</b>	<b>26</b>
<b>Industry Certifications.....</b>	<b>27</b>

## Clayton County Public Schools Choice Programs

Clayton County Public Schools choice programs are designed to attract all Clayton County students. Students entering pre-kindergarten through grade 12 have the opportunity to choose from an array of choice and Career, Technical, Agricultural, Education (CTAE) theme-based curricula offerings at all levels. Choice programs offer the opportunity for students to discover their talents and explore their interests while focusing on academic rigor. These programs provide students with a pathway to post-secondary education and career. Magnet Programs have a criteria or enrollment process while other school choice options are open to all students.



Clayton County Public Schools is a district member of Magnet Schools of America. There are two key components of magnet schools, that Clayton County Public Schools is proud to adopt: 1) theme-based curriculum and instruction and 2) school diversity. We take great pride in our programs and we continue to promote racial and socioeconomic diversity offering specialized programs that attract students from different neighborhoods and backgrounds.

### CTAE Nondiscrimination Clause

As required by Title VI of the Civil Rights Act of 1964, Section 504 of the Rehabilitation Act of 1973, Title II of the Americans with Disabilities Act, Title IX of the Education Amendments of 1972, the Age Discrimination Act of 1975, and the Americans with Disabilities Act of 1990, Clayton County Public Schools (CCPS) does not discriminate on the basis of race, color, national origin, sex, age, or disability in admission to its programs, services, or activities, in access to them, in treatment of individuals, or in any aspect of their operations. Clayton County Public Schools' Career, Technical and Agricultural Education (CTAE) department does not discriminate on the basis of race, color, national origin, sex, disability, or age in its programs, enrollment, access and activities and provides equal access to the Boy Scouts and other designated youth groups. The challenging CTAE curriculum, in conjunction with core academics, provides a robust academic skills and hands-on experience. Program offerings include: Automotive, Agricultural Science, Audio/Video and Film Technology, Business and Computer Science/IT, Construction, Cosmetology, Culinary Arts, Engineering and Technology, Education, Graphic Communication and Design, Government and Public Safety including JROTC, Healthcare Science, and Marketing Education. Program offerings vary by school location visit here for site offerings ([http://www.clayton.k12.ga.us/departments/curriculum\\_instruction\\_and\\_assessment/ctae/](http://www.clayton.k12.ga.us/departments/curriculum_instruction_and_assessment/ctae/)). The lack of English language skills shall not be a barrier to admission or participation in the district's activities and programs. The Clayton County Public Schools also does not discriminate in its hiring or employment practices. This notice is provided as required by the Title VI of the Civil Rights Act of 1964, Section 504 of the Rehabilitation Act of 1973, Title IX of the Education Amendments of 1972, the Age Discrimination Act of 1975, and the American Disability Act of 1990. Questions, complaints, or requests for additional information regarding these laws may be forwarded to the designated compliance coordinator(s). Office of Legal Compliance, Attn: Latasha Lowe, 1058 Fifth Avenue Jonesboro, GA 30326 or via phone: 770-473-2700.



# Eligibility Criteria

## Elementary School Criteria

### ***Pre-Kindergarten Programs***

Child must be four years of age on or before September 1<sup>st</sup> of the school year (Please see the Pre-Kindergarten website and/or page 12 for an updated list of schools/programs.)

### ***Kay R. Pace Elementary School of the Arts (Magnet)***

Kindergarten through Second Grade

- Completed application
- Two letters of recommendation on the official CCPS Form

Third through Fifth Grade

- Completed application
- Audition in chosen area of interest listed on the application
- Two letters of recommendation on the official CCPS Form

### ***Kilpatrick Elementary School Dual Language Magnet Program***

Only accepting Kindergarten and First Grade students for Fall 2019

- Completed application
- Currently live within Kilpatrick Elementary School's attendance zone

### ***Lake Ridge Elementary School Dual Language Magnet Program***

Only accepting Kindergarten Fall 2019

- Completed application

### ***Mount Zion Primary School Dual Language Magnet Program***

Only accepting Kindergarten and First Grade students for Fall 2019

- Completed application

### ***Unidos Dual Language School (K-5) (Magnet)***

Pre-Kindergarten and First Grade

- Completed application

Second through Fifth Grade

- Completed application
- Acceptable score on the language proficiency test



**Sibling preference is not granted for any program.**

➡ Quick Tip: Your online account will allow you to track the status of your child's application.  
[www.clayton.k12.ga.us/departments/school\\_choice](http://www.clayton.k12.ga.us/departments/school_choice)





## **Middle School Criteria**

### ***Elite Scholars Academy (Magnet)***

- Sixth through eighth grade students are required to pass the GMAS or an equivalent/alternative standardized test at the “Proficient” or “Distinguished Learner” levels in English Language Arts and Mathematics.
- Two letters of recommendation on the official CCPS Form
- Discipline infractions may impact final acceptance into the program

### ***M.D. Roberts Middle School Fine Arts Magnet***

- Eligible Audition Score (Students may audition only in areas listed on the application.)
- Must have 71 or above in each class using the most recent grading period
- Two letters of recommendation on the official CCPS Form

### ***Morrow Middle School Dual Language Magnet***

- Completed application
- Acceptable score on the language proficiency test
- Two letters of recommendation on the official CCPS Form

### ***Rex Mill Middle School STEM Magnet***

- Completed application
- 80 or above in each academic course: math, science, English language arts, and Social Studies and have “proficient” or “distinguished learner” level on each GMAS (An equivalent assessment may be used if GMAS scores are not available)
- 96% Attendance
- Two letters of recommendation from current teachers or administrators on the official CCPS Form
- Discipline infractions may impact final acceptance into the program

**Sibling preference is not granted for any program.**



**“We provide the platform for all students to be successful, productive 21<sup>st</sup> Century citizens through the transformative processes of STEM immersion.” ~Dr. Caryn Turner**

<b>High School Criteria</b>	
<b><i>Elite Scholars Academy (Magnet)</i></b>	
<p><b>1<sup>st</sup> Priority – 9<sup>th</sup> Grade</b></p> <ul style="list-style-type: none"> <li>• 3.0 GPA</li> <li>• 96% Attendance</li> <li>• Foreign Language I Completion</li> <li>• Algebra I Completion</li> <li>• Physical Science Honors Completion</li> <li>• Two Letters of recommendation on the official CCPS Form</li> <li>• Discipline infractions may impact final acceptance into the program</li> </ul> <p><b>2<sup>nd</sup> Priority – 9<sup>th</sup> Grade</b></p> <ul style="list-style-type: none"> <li>• 3.0 GPA</li> <li>• 96% Attendance</li> <li>• Foreign Language I Completion</li> <li>• Algebra I Completion</li> <li>• Two letters of recommendation on the official CCPS Form</li> <li>• Discipline infractions may impact final acceptance into the program</li> </ul> <p><b>3<sup>rd</sup> Priority – 9<sup>th</sup> Grade</b></p> <ul style="list-style-type: none"> <li>• 3.0 GPA</li> <li>• Algebra I Completion</li> <li>• Two letters of recommendation on the official CCPS Form</li> <li>• Discipline infractions may impact final acceptance into the program</li> </ul>	<p><b>10<sup>th</sup> Grade</b></p> <p>In order to be considered for lottery, all current 9<sup>th</sup> grade students must show successful completion of the following courses by the end of 9<sup>th</sup> grade. All students must also have an overall 3.0 GPA.</p> <ul style="list-style-type: none"> <li>• Math – Algebra I and Geometry</li> <li>• Science – Physical Science and Biology</li> <li>• Foreign Language – 2 years of foreign language</li> <li>• Social Studies – World History</li> <li>• English – 9<sup>th</sup> Grade Literature</li> </ul> <p>All students must be on track to have earned between 8<sup>th</sup> and 9<sup>th</sup> grade nine (9) or ten (10) high school credits.</p> <ul style="list-style-type: none"> <li>• Discipline infractions may impact final acceptance into the program</li> </ul>
<b><i>Charles R. Drew High School Medical Science Magnet</i></b>	
<p><b>1<sup>st</sup> Priority</b></p> <ul style="list-style-type: none"> <li>• Successful completion of Algebra I with an 85 or higher</li> <li>• Grade of B or higher in all core classes in 8<sup>th</sup> grade</li> <li>• Letters of recommendation from a mathematics teacher and a science teacher</li> <li>• Essay</li> <li>• Discipline infractions may impact final acceptance into the program</li> </ul> <p><b>2<sup>nd</sup> Priority</b></p> <ul style="list-style-type: none"> <li>• Grade B or higher in all Core classes in 8<sup>th</sup> grade</li> <li>• Letters of recommendation from a mathematics teacher and a science teacher</li> <li>• Essay</li> <li>• Discipline infractions may impact final acceptance into the program</li> </ul>	
<b><i>Jonesboro High School Political Leadership Magnet</i></b>	
<ul style="list-style-type: none"> <li>• 3.0 GPA</li> <li>• Essay</li> <li>• 90% average in 8<sup>th</sup> Grade Social Studies</li> <li>• Interview</li> <li>• Two letters of recommendation on the official CCPS Form</li> <li>• Discipline infractions may impact final acceptance into the program</li> </ul>	
<b><i>Lovejoy High School Mathematics and Computer Science Magnet Program</i></b>	
<p><b>1<sup>st</sup> Priority</b></p> <ul style="list-style-type: none"> <li>• 3.0 GPA</li> </ul>	

<ul style="list-style-type: none"> <li>Algebra I Honors</li> <li>Physical Science Honors</li> <li>96% Attendance</li> <li>Two letters of recommendation on the official CCPS Form</li> <li>Discipline infractions may impact final acceptance into the program</li> </ul> <p><b>2<sup>nd</sup> Priority</b></p> <ul style="list-style-type: none"> <li>3.0 GPA</li> <li>Algebra I Honors <b>OR</b> Physical Science Honors</li> <li>96% Attendance</li> <li>Two letters of recommendation on the official CCPS Form</li> <li>Discipline infractions may impact final acceptance into the program</li> </ul> <p><b>3<sup>rd</sup> Priority</b></p> <ul style="list-style-type: none"> <li>3.0 GPA</li> <li>Score Proficient or Distinguished on 7<sup>th</sup> Grade ELA or Math GMAS</li> <li>96% Attendance</li> <li>Two letters of recommendation on the official CCPS Form</li> <li>Discipline infractions may impact final acceptance into the program</li> </ul>	
<p><b><i>M. E. Stilwell School of the Arts (Magnet)</i></b></p> <ul style="list-style-type: none"> <li>Eligible Audition Score (Students may audition only in areas listed on the application)</li> <li>2.8 GPA</li> <li>Two letters of recommendation on the official CCPS Form</li> <li>Discipline infractions may impact final acceptance into the program</li> </ul>	
<p><b><i>Morrow High School Science, Technology, and Mathematics Magnet Program</i></b></p> <p><b>1<sup>st</sup> Priority</b></p> <ul style="list-style-type: none"> <li>3.0 GPA</li> <li>Algebra I Honors</li> <li>Physical Science Honors</li> <li>96% Attendance</li> <li>Two letters of recommendation on the official CCPS Form</li> <li>Discipline infractions may impact final acceptance into the program</li> </ul> <p><b>2<sup>nd</sup> Priority</b></p> <ul style="list-style-type: none"> <li>3.0 GPA</li> <li>Algebra I Honors <b>OR</b> Physical Science Honors</li> <li>96% Attendance</li> <li>Two letters of recommendation on the official CCPS Form</li> <li>Discipline infractions may impact final acceptance into the program</li> </ul> <p><b>3<sup>rd</sup> Priority</b></p> <ul style="list-style-type: none"> <li>3.0 GPA</li> <li>Score Proficient or Distinguished on 7<sup>th</sup> Grade ELA or Math GMAS</li> <li>96% Attendance</li> <li>Two letters of recommendation on the official CCPS Form</li> <li>Discipline infractions may impact final acceptance into the program</li> </ul>	
<p><b><i>Mundy's Mill High School Film &amp; Media Magnet Program</i></b></p>	
<p><b>1<sup>st</sup> Priority- 9<sup>th</sup> Grade</b></p> <ul style="list-style-type: none"> <li>3.0GPA</li> <li>96% Attendance</li> <li>Eligible Score on a Digital Portfolio</li> <li>Satisfactory Interview</li> </ul>	<p><b>1<sup>st</sup> Priority – 10<sup>th</sup> Grade</b></p> <p>In order to be considered, rising 10<sup>th</sup> graders must have a 3.0 GPA and show successful completion of the following courses by the end of the 9<sup>th</sup> grade:</p>

<ul style="list-style-type: none"> <li>• Two letters of recommendation on the official CCPS Form</li> <li>• Discipline infractions may impact final acceptance into the program</li> </ul> <p><b>2nd Priority – 9<sup>th</sup> Grade</b></p> <ul style="list-style-type: none"> <li>• 3.0GPA</li> <li>• 96% Attendance</li> <li>• Eligible Score on a Digital Portfolio</li> <li>• Satisfactory Interview</li> <li>• Two letters of recommendation on the official CCPS Form</li> <li>• Discipline infractions may impact final acceptance into the program</li> </ul>	<ul style="list-style-type: none"> <li>• 9<sup>th</sup> Grade Literature, Environmental Science or Biology, and World History</li> </ul> <p>Students must also complete the following:</p> <ul style="list-style-type: none"> <li>• Eligible Score on a Digital Portfolio</li> <li>• Successful Interview</li> <li>• Two letters of recommendation on the official CCPS Form</li> <li>• Discipline infractions may impact final acceptance into the program</li> </ul>
<p><b><i>North Clayton High School Early College</i></b></p> <ul style="list-style-type: none"> <li>• Specific academic information will be posted soon</li> <li>• Two letters of recommendation on the official CCPS Form</li> <li>• Discipline infractions may impact final acceptance</li> <li>• Current 8<sup>th</sup> grade students must reside in the school's attendance zone</li> </ul>	
<p><b>Sibling preference is not granted for any program.</b></p>	

KENNY LEON'S

true colors

THEATRE COMPANY

# KENNY LEON'S TRUE COLORS THEATRE COMPANY

*"Adding a little piece of  
theatre in the daily  
educational lives of our students..."*

## Student Transportation

School Choice magnet students receive transportation to the designated school if they reside more than one and one half (1-1/2) miles from the school and live within a designated Choice school transportation zone. Students that live outside of the Choice school transportation zone may attend the Choice school if they provide their own transportation to and from school or go to the nearest designated shuttle bus stop pick-up locations for the School Choice program. Available shuttle bus stops are listed online at [www.clayton.k12.ga.us/departments/transportation](http://www.clayton.k12.ga.us/departments/transportation). Additional bus stops will not be created for students who reside within the Choice school zone. **(Students attending Kay R. Pace School of the Arts, Kilpatrick Dual Language Program, and Mount Zion Primary Dual Language Program are not eligible for transportation. Student transfers for House Bill 251 and Student Hardship do not receive transportation.)**

## Choice Pre-K and Elementary School Programs (Grades K-5)

Anderson Elementary

- Pre-Kindergarten



**Arnold Elementary**

- Cambridge Assessment International Education Candidate

**Callaway Elementary**

- Pre-Kindergarten

**Church Street Elementary**

- Pre-Kindergarten

**East Clayton Elementary**

- Pre-Kindergarten

**Edmonds Elementary**

- Pre-Kindergarten

**Fountain Elementary**

- Pre-Kindergarten

**Harper Elementary**

- Pre-Kindergarten

**Hawthorne Elementary**

- Pre-Kindergarten

**Haynie Elementary**

- Pre-Kindergarten

**Huie Elementary**

- Pre-Kindergarten

**Jackson Elementary**

- Pre-Kindergarten

**Kay R. Pace School of the Arts**

- Dance
- Music – Instrumental
- Music – Vocal
- Theatre
- Visual Arts

**Kemp Primary**

- Pre-Kindergarten

**Kilpatrick Elementary**

- Spanish Dual Language Magnet

**King Elementary**

- Pre-Kindergarten

**Lake City Elementary**

- Pre-Kindergarten

**Lake Ridge Elementary**

- Pre-Kindergarten
- French Dual Language Magnet

**Lee Street Elementary**

- Pre-Kindergarten
- International Baccalaureate Candidate

**Marshall Elementary**

- Pre-Kindergarten

**McGarrah Elementary**

- Pre-Kindergarten

**Morrow Elementary**

- Pre-Kindergarten

**Mount Zion Primary**

- Pre-Kindergarten
- Spanish Dual Language Magnet

**Northcutt Elementary**

- Pre-Kindergarten

**Oliver Elementary**

- Pre-Kindergarten

**Pointe South Elementary**

- Pre-Kindergarten

**River's Edge Elementary**

- Pre-Kindergarten
- Chinese Dual Language School (Fall 2020)

**Riverdale Elementary**

- Pre-Kindergarten

**Suder Elementary**

- Pre-Kindergarten

**Swint Elementary**

- Pre-Kindergarten

**Tara Elementary**

- Pre-Kindergarten

**Unidos Dual Language School**

- Pre-Kindergarten
- Spanish Dual Language Magnet

**West Clayton Elementary**

- Pre-Kindergarten

**Choice Middle School Programs (Grades 6-8)****Elite Scholars Academy (6-12)**

- Early College – Advanced Learning

- Cambridge Assessment International Education Candidate

### **Jonesboro Middle School**

- Seeking International Baccalaureate Candidacy

### **M. D. Roberts Middle School**

- Dance
- Music – Band
- Music – Guitar
- Music – Orchestra
- Music – Vocal
- Theatre
- Visual Arts

### **Morrow Middle School**

- Spanish Dual Language

### **Rex Mill Middle School**

- Science, Technology, Engineering, and Mathematics (STEM)

## **Choice High School Programs (Grades 9-12)**

### **Elite Scholars Academy**

- Advanced Placement
- Dual Enrollment
- Cambridge Assessment International Education Candidate

### **Charles R. Drew High School**

- Medical Sciences

### **Jonesboro High School**

- Political Leadership
- Seeking International Baccalaureate Candidacy

### **Lovejoy High School**

- Mathematics and Computer Science

### **M.E. Stilwell School of the Arts**

- Dance
- Music - Band
- Music – Guitar
- Music – Piano
- Music – Orchestra
- Music – Vocal
- Theatre
- Visual Arts

### **Morrow High School**

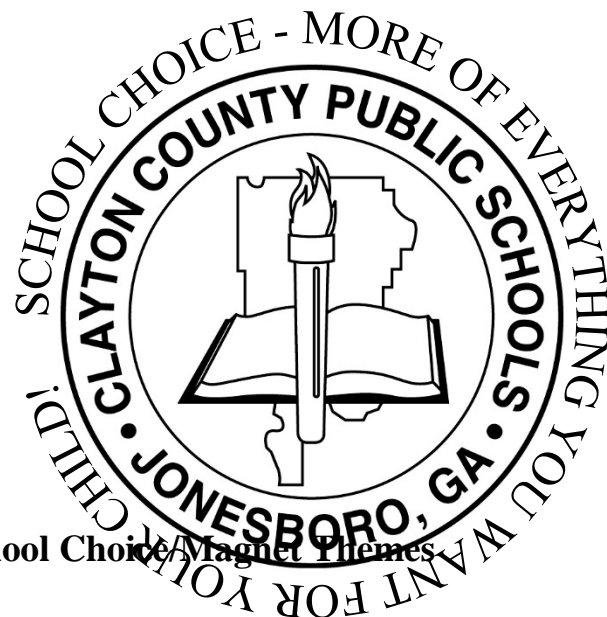
- Science, Technology and Mathematics

### **Mundy's Mill High School**

- Film & Media

### **North Clayton High School**

- Early College

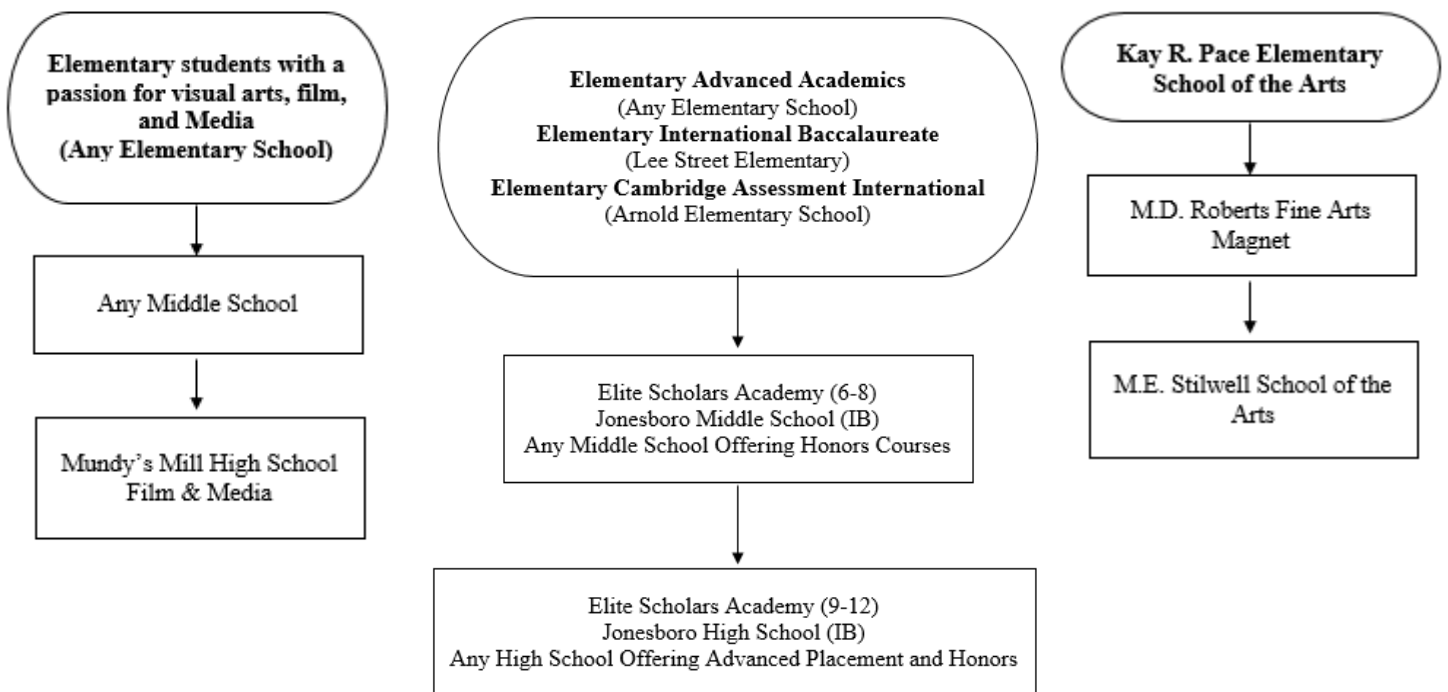


## **K-12 Pathways for School Choice/Magnet Themes**

**Elementary students with  
an interest in STEM  
(Any Elementary School)**

**Elementary students with  
an interest in Social Studies  
(Any Elementary School)**

**Kilpatrick Elementary (Spanish)  
Lake Ridge Elementary (French)  
Mount Zion Primary (Spanish)  
Unidos Dual Language School (Spanish)**



## Pre-K and Elementary School Programs

### It's Never too Early!

Elementary programs offer innovative, integrated curriculum that emphasizes the development of the whole student.

### ***Pre-kindergarten***

Georgia Pre-K uses Georgia Early Learning Development Standards (GELDS) to drive instruction and is linked to the Pre-K curriculum. They are a set of appropriate, attainable standards that are flexible enough to support children's individual rates of development, approaches to learning, and cultural context. The GELDS are a continuum of skills, behaviors, and concepts that children develop throughout this time of life. They are divided into age groups and serve as a framework for learning.

### ***Cambridge Assessment International Education (Primary)***

Cambridge Primary gives schools a world-class curriculum to develop learner skills and understanding in English, mathematics, and science. Cambridge Primary helps identify a learner's strengths and weaknesses and can be used to support learning and development.

\*Arnold Elementary School

### ***Chinese Dual Language***

Chinese Dual Language Programs allow students to develop proficiency in two languages by receiving content area instruction in both English and Chinese. Students, regardless of native language proficiency, are provided with ample exposure to languages, allowing them to achieve academic excellence while becoming bilingual and bi-literate. The program also emphasizes cultural awareness and sensitivity.

\*River's Edge Elementary School (Fall 2020)

### ***French Dual Language***

French Dual Language Programs allow students to develop proficiency in two languages by receiving content area instruction in both English and French. Students, regardless of native language proficiency, are provided with ample exposure to languages, allowing them to achieve academic excellence while becoming bilingual and bi-literate. The program also emphasizes cultural awareness and sensitivity.

\*Lake Ridge Elementary School

### ***International Baccalaureate Primary Years***

The IB Primary Years Programme curricular framework focuses on the development of the whole child in a learning environment that encourages independence, academic challenges, inquiry, creativity, and responsible citizenship. This Choice program offers a comprehensive, inquiry-based approach to teaching and learning in an internationally designed concept-based model with guidelines on students learning styles, methodologies and assessment strategies. The PYP is a combination of the best research and practices from international schools and includes the study of world languages and cultures to enhance the international perspective.

\*Lee Street Elementary (Candidate)

### ***Spanish Dual Language***

Spanish Dual Language Programs allow students to develop proficiency in two languages by receiving content area instruction in both English and Spanish. Students, regardless of native language proficiency, are provided with ample exposure to languages, allowing them to achieve academic excellence while becoming bilingual and bi-literate. The program also emphasizes cultural awareness and sensitivity.

- \*Kilpatrick Elementary School
- \*Mount Zion Primary School
- \*Unidos Dual Language School

### ***Visual and Performing Arts***

This elementary comprehensive arts program provides opportunities to develop and showcase performers. Children who enjoy creative expression through 2D and 3D art, dance, instrumental, piano, vocal music, theatre, and the written word will flourish artistically and academically in our performing, visual, and communication arts programs. This program helps develop and nurture talents so students can realize their full potential and become shining stars. Self-discipline, teamwork, and personal confidence foster success in the classroom, on the stage, and in life.

\*Kay R. Pace Elementary School of the Arts



### **Mainstage**

- *Be Here Now* by Deborah Zoe Laufer- September 20<sup>th</sup>- October 21<sup>st</sup>
- *Christmas Canteen: An Aurora Original*- November 15<sup>th</sup>- December 23<sup>rd</sup>
- *A Doll's House Part 2* by Lucas Hinath – January 10<sup>th</sup>- February 10<sup>th</sup>, 2019
- *Men with Money* book and lyrics by Bill Nelson, Music and additional lyrics by Joseph Trefler  
March 7<sup>th</sup>- April 7<sup>th</sup> 2019
- *Native Gardens* by Karen Zararías- May 2<sup>nd</sup>- June 2<sup>nd</sup> 2019

### **Studio Series**

- *The Two Kids that Blow...* by Carla Ching- September 7<sup>th</sup>- 30<sup>th</sup>
- *Rabbit Summer*- February 8<sup>th</sup>- March 4<sup>th</sup> 2019
- *MicroTeatro* - TBA

## **Middle School Programs**

### **Prepared for Both College and Career Pathways**

Designed to meet the needs of young adolescents (ages 10-15), middle schools bridge the gap between elementary and high school by providing students with an opportunity to learn in a safe, nurturing, and positive environment. Middle school magnet program courses also reinforce Reading Across the Content



Areas, Technical Writing standards, Creative Skills, Fine and Performing Arts Development, Entrepreneurship standards, and CTAE Foundation Skills.

### ***Cambridge Assessment International (Lower Secondary)***

Cambridge Lower Secondary provides students with the opportunity to pursue a rigorous program of study based on an internationally standardized curriculum. Cambridge academies differ from a traditional setting because of the instructional model, in which the curriculum is delivered to the learner in an integrated cross content and spiraled method. The goal of the Cambridge program is to build a sound academic foundation for all learners that will enable them to succeed in any high school program including AICE, Advanced Placement, International Baccalaureate, Honors and regular education programs. Students will develop skills to be confident, responsible, reflective, innovative, and engaged learners. Interested students should possess successful schooling habits, habits of mind, enjoy learning and working with like-minded students and be able and willing to direct their own learning.

\*Elite Scholars Academy (Fall 2019)

### ***Early College/Advanced Academics***

The early college magnet is an all honors school. The magnet program enables students to experience rigorous high school and college coursework that leads to improved outcomes. These accelerated course offerings will prepare students for their required AP courses in high school and their Move On When Ready (dual enrollment) coursework.

\*Elite Scholars Academy

### ***International Baccalaureate (IB) Middle Years Programme***

The International Baccalaureate Middle Years Programme (IBMYP) is for students in grades 6-10 and provides a framework of academic challenge and life skills appropriate to this stage of adolescence. The IBMYP offers a holistic approach that emphasizes critical thinking skills, global citizenship, and intercultural awareness, as well as traditional school subjects. The curriculum consists of eight subject groups explored through six global contexts: identities and relationships, orientations in space and time, personal and cultural identity, globalization and sustainability, fairness and development, and scientific and technical innovation. The eight academic subjects required each year of the IBMYP are: Language and Literature (English), Language Acquisition (World Language), Mathematics, Sciences, Individuals and Societies (Social Studies), Arts, Technology (Design), and Physical and Health Education. In their final year (grade 10), students will also undertake an independent personal project to demonstrate the development of their skills and understanding.

\*Jonesboro Middle School (Seeking Candidacy - Fall 2020)

### ***Spanish Dual Language***

The Spanish Dual Language program offers a continuation for students who have been enrolled in the Unidos Dual Language School or a similar Spanish Dual Language program at the elementary level or who have a high level of Spanish Language proficiency. Highly motivated students are engaged in a challenging academic environment. A Spanish language placement test will be given in order to verify Spanish Language Proficiency.

\*Morrow Middle School

***Science, Technology, Engineering, and Mathematics (STEM)***

Science, Technology, Engineering, and Mathematics (STEM) topics are integrated into all aspects of learning including reading, writing, and social studies. All students are engaged in hands-on science and math activities in their classrooms, which are supported by the resource labs. Through these hands-on experiences, students develop skills in problem solving, critical thinking, and teamwork.

\*Rex Mill Middle School

***Visual and Performing Arts***

Creative and artistic opportunities are the main attractions in the Arts programs. All students enrolled in this school are dedicated to the study of the arts. Intensive study and time is devoted to each student's chosen arts major, while exploring other artistic disciplines in the classroom, in the studio, and on stage. The program challenges students to achieve a high standard of artistic professionalism and academic excellence. Students are exposed to professional artists, field trips, and artistic performances as part of the program.

\*M.D. Roberts Middle School

## **High School Programs**

***Aviation and Innovation Academy***

Aviation Career Academy enables students to enter into a thriving industry that is ever-evolving.

\*North Clayton High School Flight Operations

### ***Cambridge Assessment International***

The Cambridge Advanced International Certificate of Education (AICE) Diploma Program is an innovative and accelerated method of academic study offered solely through the University of Cambridge International Examinations (CIE). Students select from a broad range of courses and are challenged to work at the highest level of international standards. Diplomas are granted to students who earn 6 or more credits by passing end-of-course exams at the AS level and A level with at least one course from each of the three content groups, Mathematics and Science, Languages, and Arts and Humanities.

\*Elite Scholars Academy

### ***Early College/Advanced Academics***

Early college enables students to experience rigorous high school and college coursework that leads to improved outcomes. Students will take courses at the traditional school setting where they will be enrolled in college courses at Clayton State University simultaneously. In addition to rigorous Math and Science courses required, an integrated STEAM curriculum will be available for all students. **Students must earn a minimum score on the SAT or ACT in order to be enrolled at Clayton State University.**

\*Elite Scholars Academy

### ***Film & Media Magnet***

The Film and Media program is an innovative pathway for media savvy learners to experience high school in a contemporary format. The Academy leverages the media rich and increasingly digital interactive lifestyles of students to engage them fully in the 4-year learning experience so that they are uniquely equipped to vie locally, nationally and internationally for jobs and careers after high school or college.

\*Mundy's Mill High School

### ***International Baccalaureate (IB) Diploma Programme***

The IB Diploma Programme (DP) is an academically challenging and balanced program of education that prepares students in grades 11-12 for effective participation in a rapidly globalizing world and for postsecondary success in college and career. Students study at least two languages and increase understanding of diverse cultures. Due to its rigorous nature, preparation for the IB Diploma Programme is offered through the IB Middle Years Programme curricula in the 9<sup>th</sup> and 10 grades or through other accelerated curricula. The IB diploma leads to advanced standing in universities throughout the world. The IB Diploma Programme framework includes required courses within six subject groups: Studies in language and literature, Language acquisition, individuals and societies, Sciences, Mathematics, and the Arts. Schools tailor course sequences to meet each school's focus. Algebra I or Algebra I Honors and Spanish or French for high school credit are highly recommended to prepare students for the rigor of the program.

\*Jonesboro High School (Seeking Candidacy – Fall 2022)

### ***Mathematics and Computer Science***

The Mathematics and Computer Science programs are designed to meet the needs of students who wish to specialize in the areas of computer science, research, and mathematics. Students take accelerated and enriched coursework with an emphasis on high-level mathematics, science and computer science courses,

receiving honors or college-level credit. Exciting opportunities to explore the community, participate in competitions, and solve real world problems are afforded.

\*Lovejoy High School

### ***Medical Sciences***

The Medical Sciences program offers an innovative, integrated learning environment designed to provide the student with the medical skills and training necessary to succeed in postsecondary healthcare career education and/or to successfully transition into the healthcare workforce. This comprehensive program combines a rigorous academic curriculum with intense clinical and laboratory experiences.

\*Charles R. Drew High School

### ***Political Leadership***

In this program, students will learn to build on the strong relationships with leaders in government and begin looking towards developing relationships with state, national, and international leaders. Students will increase their knowledge of government, civics, and ethics which will empower them to develop a more global perspective on United States and World affairs.

\*Jonesboro High School

### ***Science, Technology, and Mathematics (STM)***

This four-year, pre-university course of study is designed to meet the needs of highly-motivated students wishing to pursue a tailored curriculum with opportunities to pursue studies in mathematics, science, engineering, and medicine. Students have the opportunity to explore the community, participate in competitions, and solve real world problems.

\*Morrow High School

### ***Visual and Performing Arts***

The Visual and Performing Arts program provides unique opportunities for the committed and talented student who has a serious interest in the Arts. In-depth study of the Arts develops conceptual and technical skills of artistic expression and brings to fruition the student's individual interpretations of the world. The Art training is provided by highly trained art teachers as well as professionals and working artists-in-residence. Students participate in extensive highly specialized course in the arts as well as a full academic program.

\*M.E. Stilwell School of the Arts



computer science in every high school

### **General Information – Magnet Programs and School Choice**



#### **Choice Programs Information**

- School Choice website – [www.clayton.k12.ga.us/departments/school choice](http://www.clayton.k12.ga.us/departments/school_choice)

- School Choice Fair – September 22, 2018
- Visit school websites
- Email: [schoolchoice@clayton.k12.ga.us](mailto:schoolchoice@clayton.k12.ga.us)

[tealsk12.org](http://tealsk12.org)

#### Application Deadlines for 2019-2020 School Year

**December 1, 2018:** Application deadline for Magnet Programs and Career Academies

Late applications will be accepted after January 15, 2019; however, they will not be included in the March 2019 Choice lottery and will be entered after all applicants in the wait pool have been assigned.

#### Application Submission

Complete application online at [www.applyclayton.com](http://www.applyclayton.com)  
Students currently enrolled in a Clayton County Public School must enter their student ID number.

#### Application Guidelines

**Non-Clayton County Residents** – Please review the residency requirements on page 23.

#### **Clayton County Residents – Continue with this section.**

- The student's and parent's address must match the address on file in Infinite Campus or the application will not be processed. Infinite Campus must reflect your current residential address at the time of application.
- The parent and student must be full-time Clayton County residents at the time of the application.
- Only ONE application per student may be submitted.
- A maximum of two choice programs per application may be selected.
- Choices may be any combination of programs or schools.
- Applicants rank first and second choices in order of preference. First and second choices do not have equal chances of being selected. Programs may have limited numbers of available seats and not have any second choice students assigned in the lottery.
- Identification of a second choice does not decrease a student's chance of being selected to their first choice.
- Sibling preference is not applicable to school choice.
- Application changes: If applying online, one application selection change will be allowed before the published deadline dates.
- If the applicant has attended a similar preparatory Choice theme program (Arts, IB, STEM, Dual Language, etc.) at a lower grade level (grades 4-5 or grades 7-8), this should be noted on the application.
- Students with Disabilities are eligible to apply to Choice programs. If accepted to the school, an IEP team may convene to ensure the IEP can be implemented.
- English Language Learners and 504 students can be accommodated in all Choice programs and are encouraged to apply.

#### Ranges of Number of Available Seats in Choice Programs

The greatest number of available seats at each school is for students entering kindergarten, six, or nine (Except Elite Scholars Academy 9<sup>th</sup> grade).

#### Eligibility of Applicants

- All applicants must meet age, residency (non-tuition students), and academic requirements.
- Elementary requirements are listed on page 7 of this booklet.
- Middle schools with eligibility criteria are listed on page 8 of this booklet.
- The eligibility criteria for high school Choice programs are listed on page 9 of this booklet.
- For incoming 9<sup>th</sup> graders, GPA is calculated on the average of all classes for grade 6 through grade 8.
- For students in grade 9, the GPA listed in Infinite Campus at the time of eligibility determination will be considered.
- Students not meeting eligibility criteria will not be placed in the Choice lottery for that program.
- If a student is determined ineligible for his/her first choice selection, the second choice program selection on the application does not move to the first choice preference.

#### Current Home Education, Virtual School, Private School, and Charter School Students

Parents must submit proof of residency, transcripts, and standardized assessment results to the School Choice department via email ([schoolchoice@clayton.k12.ga.us](mailto:schoolchoice@clayton.k12.ga.us)) no later than December 1, 2018. Please check eligibility requirements for complete details.

#### Auditions

**Schools: Kay R. Pace School of the Arts, M.D. Roberts Middle School Fine Arts Magnet, and M.E. Stilwell School of the Arts**

- Students must audition in the chosen area of interest listed on the application.
- In order to be eligible for the magnet lottery, the student must receive an eligible audition score for Kay R. Pace School of the Arts, M.D. Roberts Middle School Fine Arts Magnet, and M.E. Stilwell School of the Arts.
- After an application is processed by the School Choice Department, approved applicants will be scheduled for an audition by the Arts School.
- Approved applicants will be notified via e-mail and/or U.S. Mail of the audition procedures and/or the time and date of the student audition.
- Higher audition scores are required for ascending grade levels. Contact the individual schools for more information.
- If a child is ill on the date of the audition, that student may be considered for a new audition date and time upon receipt of a medical doctor's written verification of illness. This verification must be submitted to the appropriate Arts School within three (3) school days of the student's scheduled audition. A new audition date and time will be selected by the school only if there are more audition dates available.
- Parents/legal guardians who believe their child was not allowed an equitable opportunity to a Choice program



during the audition or eligibility process as a result of a technical problem or inequity, may request an appeal within five (5) days of the audition.

- An application for an appeal of Choice program eligibility must be submitted to the Director of School Choice within five (5) school days of the audition. At the time of the application, parents are required to sign a statement acknowledging that they have five days to appeal and no appeal will be available after the five day window following a student's audition.

#### Lottery Selection Process

The lottery will be conducted during the week of March 11-15, 2019. Student placement is limited per program, grade level, and school. All eligible students must adhere to contractual understandings; however, enrollment is not guaranteed for any applicant.

#### Post Lottery

- Students who applied online or provided an e-mail address on the hard copy application and are selected in the Choice lottery will receive notification from the district via e-mail by March 25, 2019.
- Students who were not selected in the Choice lottery will receive notification from the district via email or U.S. Mail on or about March 25, 2019.
- Once a student is selected for one of his/her choices, he/she is immediately removed from the wait pool for the remaining program on the application.
- If a student declines his/her first choice assignment, the student must attend his zoned school.
- Students assigned to their first choice cannot choose to remain in the wait pool for their second choice.
- If a student declines his/her second choice assignment, he/she may remain in the wait pool for their first choice. A decline of a second choice lottery assignment will automatically place the student in the wait pool for the first choice. To be considered, eligibility criteria must be met for the first choice program.
- Students who are selected and accept placement into a Choice program must agree to participate on a full time basis.
- An applicant may not be selected for either one of his/her choices. If this occurs, the student is placed in a wait pool and may be assigned for any openings reported by the school.

- Student may be assigned through the lottery process until 4:00p.m. on the first day of school.
- If a student exits a Choice program, voluntarily or involuntarily, he/she must return to his/her zoned school, regardless of their grade level.
- If a student exits a Choice program voluntarily or involuntarily, that student will forfeit the seat and may not apply in any future lottery cycle to the same Choice program.
- If a student is not selected to attend a Choice program prior to the start of the 2019-2020 school year, a new application may be submitted for the 2020-2021 school year.

#### Accepted Students

- All Choice programs require, as a condition for admission, that parents/legal guardians sign a contract agreeing to the student requirements of the Choice school.
- The parent or guardian has the right to withdraw the student at any time but removal at the end of the semester or year is highly recommended.
- A student who fails to meet the standards established in the contract will be placed on probation.
- Certain programs may require students to maintain designated GPA for continued participation.
- Magnet programs will have a different dress code from the district-wide dress code. Please review the school's website for the current requirements.
- If the student does not meet the terms of probation by the end of the designated marking period, or a Level 3 or 4 incident according to CCPS Student Code of Conduct occurs, a diverse committee of school and district representatives will be established to review, discuss, and recommend the appropriate action, as per the school program requirements.
- Schools may only exit students at the end of a semester unless a serious offense warrants such removal (Discipline Level 3 or 4 or recommendation of the school committee). If a student is exited, the student is no longer eligible to apply for any program at the school in any future application cycle.

## Non-Resident Students (Effective Date June 4, 2018)

Clayton County Public Schools (CCPS) provides an opportunity for students who are not residents of Clayton County to attend schools within the District, subject to the below guidelines.

All non-resident students, who do not fall under the exceptions listed in JBCA–R(1), shall be considered “tuition-based, non-resident” students and required to pay tuition to attend schools within the CCPS. Tuition payments shall be waived for children of employees accepted as non-resident students.

To attain tuition-based, non-resident status, each student must submit an application to attend Clayton County Public Schools and receive written approval from the Superintendent or his/her designee. Applications will be evaluated according to the following criteria: a) history of good behavior, b) average or above average academic achievement through past grades and/or standardized achievement test scores, and c) evidence of satisfactory attendance and (d) current instructional program services which will meet the educational, physical and emotional needs of the student.

The Superintendent and his/her designee shall have the right to refuse admission to any applicant if, in his/her opinion, accepting the student would not be in the best interest of the school system. Acceptance of tuition-based, non-resident students may also be limited by school capacity and program availability. A decision regarding the tuition-based, non-resident request will be considered final.

If false information is provided during the application process, or the circumstances under which the approval was granted changes, the tuition-based, non-resident student's enrollment may be revoked.

**Tuition-based, non-resident students must have been approved to attend the District before applying for any magnet programs/schools. After a qualified waiting period, a tuition-based, non-resident student under these regulations will be treated as a resident student for the purposes of the lottery process and magnet programs. To qualify, the tuition-based, non-resident student must have attended a CCPS school for two (2) consecutive years as a student. Additionally, students in this category do not receive preferential treatment in the lottery process for assignment or in programs where students must apply to be accepted (i.e. magnet schools/programs), nor will they bump students currently on the wait list for these programs.**

Tuition rates shall be calculated annually and set based upon guidelines set forth in accordance with state law and shall be due on a fee schedule determined by District procedures. Payments shall be made on a per semester basis, at least ten (10) business days in advance of the start of the semester. Payments will only be accepted via credit or debit card, or in postal money order or Cashier’s Check form. No personal check or cash will be accepted. Note: if a student voluntarily withdraws or is involuntarily withdrawn as a result of a disciplinary sanction within a semester, any pre-paid tuition will not be reimbursed.

For all tuition-based, non-resident student approvals, the following provisions apply:

1. Students who receive a tuition-based, non-resident approval and enroll in the year in which permission is granted may attend the school through the highest grade of the particular school prior to re-applying;
2. Transportation must be provided by the parent/guardian; However, the parent/guardian may take advantage of the District shuttle opportunities, if available;
3. If the student receives special education services, the school selected must have the special education services required by the current Individual Education Plan (IEP); and
4. **If the student transfers at the high school level, he/she must meet Georgia High School Association requirements to participate in competitive interscholastic activities.**

Subject to other qualifications for non-resident students, students who are residents of nations other than the United States who reside with a family who is a resident of Clayton County may be admitted without payment of tuition under recognized foreign student exchange programs.

The school system reserves the right to terminate the enrollment of a non-resident student at any time, for any legal reason, including failure to pay tuition on time, poor academic performance, poor attendance, excessive tardiness, or poor behavior as determined by the Superintendent or his/her designee.

## Applying Online

Using the parent dashboard, your online account will allow you to track the status of your application. Applying online gives you priority access to the lottery results. Prior to applying for a Choice program, we encourage you to attend

the Open House for each Choice program to which you intend to apply. Open House dates are available at: [www.clayton.k12.ga.us/departments/school\\_choice](http://www.clayton.k12.ga.us/departments/school_choice).

## How to Apply

Go to **www.applyclayton.com** on your computer, tablet, or smartphone

Click “Apply Now”

Create your Parent/Guardian Account\* with a user ID and password that is easy to remember

User ID: \_\_\_\_\_

Password: \_\_\_\_\_

#### Reminders

A separate application must be submitted for each child applying for a Choice program.

Remember to “Submit” your application or it will not be considered in the Choice lottery. Your application status can be viewed on the parent dashboard upon login.

## Deadline

# December 1, 2018

Scan the QR code to add the icon to the home screen of your mobile device.



**www.applyclayton.com**

Important Dates for the 2019-2020 School Year Open Enrollment Process
<b>School Choice Fair</b> Clayton County Public Schools Professional Learning Center 1087 Battle Creek Road Jonesboro GA 30236  <b>September 22, 2018</b> 9:00am-12:00pm
<b>Application Assistance</b> Clayton County Public Schools Professional Learning Center 1087 Battle Creek Road Jonesboro GA 30236  <b>October 10, 2018</b> 8:00am-5:00pm
<b>Application Assistance</b> Clayton County Public Schools Professional Learning Center 1087 Battle Creek Road Jonesboro GA 30236  <b>October 13, 2018</b> 8:00am-3:00pm
<b>Application Assistance (Late Applicants)</b> <b>School Choice Fair</b> Clayton County Public Schools Professional Learning Center 1087 Battle Creek Road Jonesboro GA 30236  <b>February 2, 2019</b> 8:00am-3:00pm

## Pre-Kindergarten Registration for 2018-2019 School Year

### PRE-KINDERGARTEN REGISTRATION DATES:

Monday, March 4, 2018 – Friday, March 8, 2019

### PRE-KINDERGARTEN HOURS:

8:30AM - 11:30AM and 1:00PM – 3:00PM

- ❖ *To qualify for this program, a child must be four years of age on or before September 1, 2019 of the school year and must be a resident of Clayton County.*
- ❖ Acceptance into Clayton County Public Schools' Pre-K classes will be based on a computer generated "Lottery System" for each site. Priority is given to children residing within the school's attendance area. Parents may register their child for **one** Clayton County School's Pre-K site of their choice.

### Items Needed to Register:

- ❖ Social Security Card
- ❖ Child's Original State Issued Birth Certificate
  - ❖ Parent's Government Issued Photo ID
- ❖ Two Current Proofs of Residency **(within 30 days)**  
**(mortgage statement, rental agreement, utility bills: gas, water, and electric)**



There are several types of Student Transfers available for consideration. Please take the time to review each option to determine which request(s) meet your needs.

### Employee Transfer Request

Children of full time Clayton County Public Schools employees will be allowed to attend Clayton County Schools regardless of their residence location under certain conditions. Employees do not receive preferential treatment in the lottery process for student assignment, or in programs where students must apply to be accepted. Please refer to Board Policy JBCA.

#### Important Dates for the 2019-2020 School Year Employee Transfer Application

**April 11, 2019 – May 10, 2019**

Available for current employees only, in RapidIdentity under Employee ODD Link

Once your application is submitted, you will no longer have access to change or add any information. You will receive a confirmation number for reference purposes only. This number does not in any way indicate a decision of approval or denial.

### Hardship Transfer Request

According to the Clayton County Public Schools Board Policy JBCD, “The Board of Education will not furnish transportation for any student granted a transfer to attend school outside his/her attendance area.”

### HB251 Transfer Request

According to Georgia HB251, the parent of a student enrolled in a public elementary or secondary school in this state may elect to enroll such student in a public school that is located within the school system in which the student resides other than the one to which the student has been assigned by the local board of education if such school has classroom space available after its assigned students have been enrolled.

### SB10 Transfer Request

The Georgia Special Needs Scholarship (GSNS) Program is a school choice program available for special needs students attending Georgia public schools who are served under an Individualized Education Plan (IEP). Please visit the CCPS Student Services website or the Georgia Department of Education website for more information.

#### Important Dates for the 2019-2020 School Year HB251, SB10 and Hardship

**May 3, 2019 – June 7, 2019**

These are the only dates applications will be accepted for the 2019-2020 school year. Approval and denial letters will be mailed before **July 1, 2019**.

**July 22, 2019 – August 2, 2019**

Request for Kindergarten student transfers

Once your application is submitted, you will no longer have access to change or add any information. You will receive a confirmation number for reference purposes only. This number does not in any way indicate a decision of approval or denial.

#### Guidelines and Lottery Process

- **When the number of transfer requests exceeds the remaining available seats within each individual school site, that school is closed for the year.**
- Schools that adhere to specific enrollment criteria, a lottery process for student assignment or programs where students must apply to be accepted are not included in this process. Examples include, but are not limited to, all magnet programs, Pre-K, and career academies.
- For your convenience, computers and scanners are available to the community to assist with this application process.

#### Computer Access

- **Administrative Complex, 1050 Fifth Avenue, Jonesboro GA 30236**
- **Professional Learning Center, 1087 Battle Creek Road, Jonesboro GA 30236**
- **Your Child’s School**
- **Public Library**

**\*\*\*Only one student transfer approval will be granted per school year. The approved transfer must occur during the first week of school during the fall semester; the approval will expire 10 days after the beginning of the fall semester.**

**\*\*\*If you previously received a student transfer letter that allows your child to stay at the school until the highest grade at the school and you enrolled your child during the valid time period, then do not apply again. Your application will not be processed.**

#### Industry Certifications

#### Career Exploration



The benefits of industry-based credentials are many: High school and postsecondary CTAE programs that lead to associate degrees, certificates, and industry-recognized credentials can help young people find skilled employment and give them the option of later returning to school for a higher degree. Industry-based certifications also provide employers with a standard that is useful in evaluating and “benchmarking” a candidate who has no substantial work experience. This is not to suggest that higher education is not a desirable next step for students, but a CTAE program that has multiple points of entry. Research studies indicate students who attain industry certifications earn more money over the course of their careers than those lacking industry-based certifications. Students who earn a certification feel a sense of accomplishment improving student engagement in school, academic and technical achievement, and successful transition to further education and careers.

- Biotechnology – Research Development-Precision
- Biotechnology – Research Development-NOCTI
- Computer Science – MTA Software Development
- Computer Science – Sun Java
- Cybersecurity – Security+
- Diagnostics Clinical Lab – NCHSE
- Diagnostics Clinical Lab – OKCareer Tech
- Diagnostics Non-Invasive Technology – NCCT-NCET
- Diagnostics Non-Invasive Technology – NCHSE
- Diagnostics Non-Invasive Technology – NHA-CET
- Diagnostics Phlebotomy – NCHSE
- Electronics – NOCTI
- Electronics – SkillsUSA
- Engineering Drafting and Design – ADDA Apprentice-Mechanical
- Engineering Drafting and Design – ADDA Drafter-Mechanical
- Engineering Drafting and Design – Autodesk-AutoCAD
- Engineering Drafting and Design – Autodesk-Inventor
- Engineering Drafting and Design – CSWA
- Engineering Drafting and Design – SkillsUSA
- Engineering and Technology – NOCTI-State Developed Exam
- Engineering and Technology - SkillsUSA
- Health Information Management – HTHU-CHHS
- Health Information Management – NCCT-NCMOA
- Health Information Management – NCHSE
- Health Information Management – NHA-CMAA
- Health Information Management – NOCTI
- Health Information Management – OKCareerTech
- Health Information Technology - CTC
- Health Information Technology – CTCP
- Health Information Technology – CTL
- Health Support Services – NCHSE
- Health Therapeutic Services – Allied Health Medical – NCCT-NCET
- Health Therapeutic Services – Allied Health Medical – NCCT-NCMOA
- Health Therapeutic Services – Allied Health Medical – NCCT-NCPCT
- Health Therapeutic Services – Allied Health Medical – NCHSE
- Health Therapeutic Services – Allied Health Medical – NHA-CCMA
- Health Therapeutic Services – Allied Health Medical – NHA-CET
- Health Therapeutic Services – Allied Health Medical – NHA-CMAA
- Health Therapeutic Services – Dental Science – NOCTI
- Health Therapeutic Services – Dental Science – Precision Dental Assistant II
- Health Therapeutic Services – Emergency Medical Responder – FEMA
- Health Therapeutic Services – Emergency Medical Responder - NCHSE
- Health Therapeutic Services – Emergency Medical Responder – NREMT
- Health Therapeutic Services – Exercise Physiology-NASM-CPT
- Health Therapeutic Services – Exercise Physiology-Precision
- Health Therapeutic Services – Patient Care-CAN
- Health Therapeutic Services – Patient Care-NCCT-NCPCT
- Health Therapeutic Services – Patient Care-NCHSE
- Health Therapeutic Services – Patient Care-NHA-CPCT
- Health Therapeutic Services – Pharmacy-NCHSE
- Health Therapeutic Services – Pharmacy-OKCareerTech
- Health Therapeutic Services – Public Health-NCHSE
- Health Therapeutic Services – Public Safety Communications-NCHSE
- Health Therapeutic Services – Sports Medicine-NCHSE
- Health Therapeutic Services – Sports Medicine-OKCareerTech
- Health Therapeutic Services – Sports Medicine-Precision
- Health Therapeutic Services – Surgical Technology-NCCT-TS-C
- Health Therapeutic Services – Surgical Technology-NCHSE
- Health Therapeutic Services – Surgical Technology-OKCareerTech
- Information Support Services – MTA Security Fundamentals
- Information Support Services - NOCTI
- Information Support Services – OKCareerTech Microcomputer Repair
- Networking - Microcomputer
- Networking – MTA Networking Fundamentals
- Networking - NOCTI
- Networking – OKCareer Tech
- Programming – MTA HTML5 Application Developer
- Programming – MTA Software Development
- Programming – Sun Java
- Web Digital Design – Adobe Dreamweaver
- Web Digital Design – CIW-SDA
- Web Digital Design – CIW-WDS
- Web Digital Design – MTA HTML5



Practical, art-infused teaching strategies and insights that deepen creative thinking in schools.

- Builds creative capacity
- Embeds project-based learning in K-8 schools
- Embeds inquiry-based learning in K-8 schools

**INTEGRATES ACROSS THE  
CURRICULUM AND ACROSS GRADE  
SPANS**

For details, contact James Wells at [jwells@crayola.com](mailto:jwells@crayola.com) or visit our education website at [www.crayola.com/educators](http://www.crayola.com/educators).

