



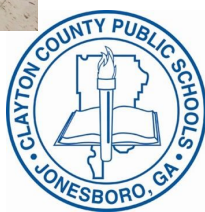
# *SPLOST* Construction

- ▶ KAY R. PACE SCHOOL OF THE ARTS • PG. 1 & 2
- ▶ KILPATRICK/SUDER & JONESBORO HIGH • PG. 3
- ▶ POINTE SOUTH MIDDLE & NORTH CLAYTON MIDDLE • PG. 4
- ▶ ADAMSON MIDDLE & RIVERDALE HIGH • PG. 5
- ▶ UPCOMING PROJECTS • PG. 6

## Kay R. Pace School of the Arts Opens



The new Kay Pace School of the Arts opened for students and staff in January. The much anticipated facility provides the finest for our district's most artfully talented Kindergarten through 5th grade students. Bridged with M.D. Roberts Magnet Middle School in Jonesboro, Kay Pace was previously located within a shared facility but expansion and community interest prone the need for this grand project. The roughly 40,000 square feet interior build out consists of 19 standard instructional classrooms, a cafeteria and two playgrounds. The Fine Arts classrooms consists of Instrumental, Theatre, Choral, Visual Arts, Dance and a Black Box for performances. The BRPH designed project was constructed by Construction Works, Inc. and \$4.95 Million.





---

## Kilpatrick & Suder Elementary

Kilpatrick and Suder Elementary are now complete. All classroom phases and offices are complete which included new paint, flooring and lighting. On the exterior both facilities received new canopies, new LED school signs, K-2nd grade & 3rd-5th grade playgrounds and drop-off areas. Suder Elementary received new casework in the classrooms and Kilpatrick received new windows. Lastly, both facilities now have upgraded restrooms, received new HVAC in their gyms along with new flooring and paint. At a sum of \$13.5 Million both facilities definitely now have a refreshing new look. Kilpatrick and Suder Elementary were both designed by BRPH and renovated by Hogan Construction, Inc.

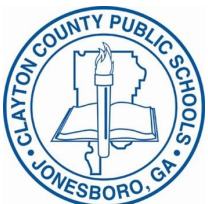


---

## Jonesboro High



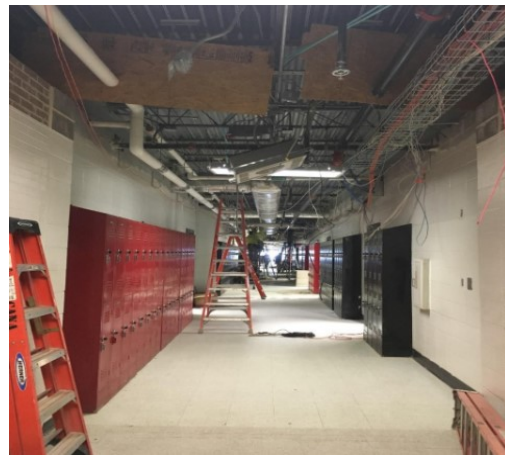
Phase IA of Jonesboro High is definitely deep into progress. The original competition gym has been demolished. Excavation and grading is complete 15 feet below ground level for the new gym that will be constructed in its place. Grading has also begun at the location of the demolished media center and engineering buildings. The retaining wall necessary to build up the site for the building pad for the new cafeteria, CTAE classrooms and front entrance is near completion. With a Fall opening for the new Gym, Meja Construction is making major progress. The Cooper Carry designed \$45.6 Million project is slated for completion in the Fall of 2020.



---

## Pointe South Middle

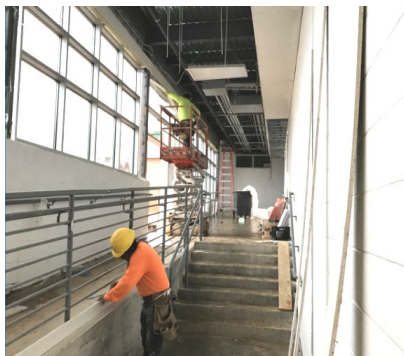
The renovation of Pointe South Middle has begun and making great progress. Phase I is already complete and demolition of Phase II has begun. The scope of Phase I will be mirrored in Phase II will include the new finishes, lighting, windows, restroom upgrades of new fixtures & resinous floors, new HVAC units and painting of all lockers. Throughout the remainder of this project, all classroom wings and commonplace areas such as the gym, cafeteria, media center and all administrative areas will receive the same scope along with new fire alarm, burglar, intercom and video surveillance systems. This renovation project was designed by Perkins+Will and is being performed by J&R Construction and Development, Inc. at \$8.7 Million.



---

## North Clayton Middle

Phases one through four are now complete and demolition of phase five has begun. These includes consisted of finishes , lighting and HVAC. All block work is now complete and painting, handrails & storefront installation is ongoing in the new corridor connecting the existing gym with the new classroom wings. Siding removal around the entire perimeter of the building is ongoing as preparation for the metal panels continues. The new MDF and IDF rooms are ongoing while the new low voltage systems installation continues as well to become fully operational over the Summer. The North Clayton Middle project scheduled to be complete by the Summer of 2019.

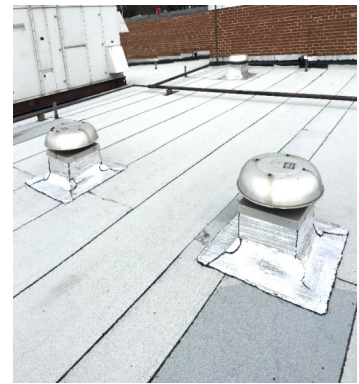
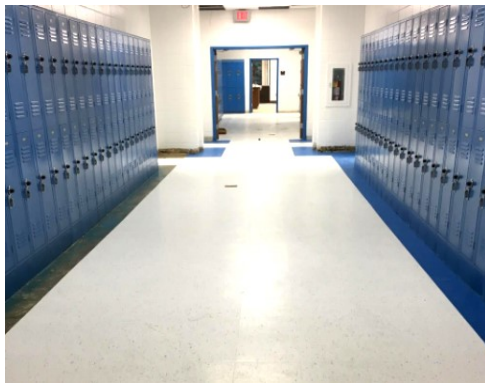




---

## Adamson Middle

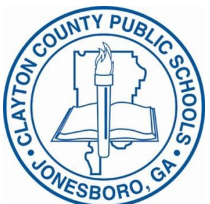
Renovations at Adamson Middle are now entering phase four. Phase three consisted of converting an unused classroom into an orchestra classroom with a practice room for students. Moving along with demolition, all corridor flooring, markerboards, windows and doors have been removed and students & staff relocation have taken place into their temporary classrooms. Also, as the classrooms are progressing in the interior of the building, on the exterior, reroofing of the entire building is progressing as well. The white cap and flashing is being installed after hours in phases one through three. The Adamson Middle renovation project will be completed after the Summer of 2019 by SRS, Inc.



---

## Riverdale High

The large scale renovation at Riverdale High continues to progress. Phases one and two are now complete including the opening of the new greenhouse. Phase three is underway and it is quite clear. Demolition is complete and steel is now erecting for the new grand façade of the front entry and staff have been relocated to the CTAE building until the end of the Summer. Within A wing, demolition and plumbing rough-ins for the science labs and restrooms is ongoing and rough-ins for the restrooms and science labs. Outside of the facility, the old HVAC units have been removed and the new roof has begun. Riverdale High should be complete by May of 2020.



---

## Upcoming Projects

The Clayton County Public Schools' Construction has been in design gearing up for the Summer of 2019 while managing the ongoing projects that will be alongside these projects. Brown Elementary, Mt. Zion Elementary and HVAC III & IV will have their bid openings this Spring. While the new Morrow High, Eddie White Elementary and College & Career Academy are still under design for Fall and Winter bid openings. Your SPLOST Dollars continue to be at work for the community of Clayton County Public Schools.

