

## What is CTAE?

Career, Technical, & Agricultural Education (CTAE) is a student centered program that fosters career inspiration in PreK-2, career awareness in elementary school, career visualization in middle school, and career preparation in high school as vital components of one's educational career. Clayton County Public School's CTAE program provides the interdisciplinary and technical skills to every student focused on attaining the knowledge and abilities that businesses and industries desire for in-demand, high-skilled, high-wage occupations.

Students who graduate from high school after successfully completing a CTAE "Career Pathway" are equipped for immediate employment, post-secondary education, and life-long learning. In essence, students in CTAE are "college, career and workforce ready" - prepared to compete in the global marketplace.



## Career, Technical & Agricultural Education (CTAE)

1058 Fifth Avenue  
Jonesboro, GA 30236  
www.clayton.k12.ga.us  
770.473.2700

**Mary Shepherd**  
Director, CTAE  
mary.shepherd@clayton.k12.ga.us

**Carrie Dean**  
CTAE Lead Teacher  
carrie.dean@clayton.k12.ga.us

**Greg Guhl**  
Youth Apprenticeship Coordinator  
gregory.guhl@clayton.k12.ga.us

**Ed Cook**  
Workforce Innovator  
roy.cook@clayton.k12.ga.us

**Rodriegus Gardner**  
Workforce Innovator  
rodriegus.gardner@clayton.k12.ga.us

**Michelle Jones**  
Workforce Innovator  
jmichelle.jones@clayton.k12.ga.us

**De Wayne Martin**  
Workforce Innovator  
dewayne.martin@clayton.k12.ga.us

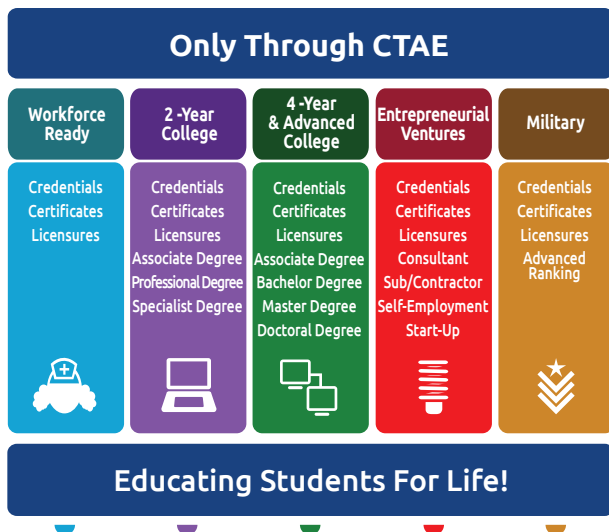
**Kerine Francis**  
Administrative Assistant  
kerine.francis@clayton.k12.ga.us



Clayton County Public Schools  
Dr. Morcease J. Beasley  
CEO/Superintendent of Schools

Clayton County Public Schools (CCPS) does not discriminate on the basis of race, color, national origin, sex, age, or disability in admission to its programs, services, or activities, in access to them, in treatment of individuals, or in any aspect of their operations. Clayton County Public Schools' Career, Technical and Agricultural Education (CTAE) department does not discriminate on the basis of race, color, national origin, sex, disability, or age in its programs, enrollment, access and activities and provides equal access to the Boy Scouts and other designated youth groups.





## Work-Based Learning

The Work-Based Learning (WBL) program allows qualified students who have mastered skills in pathway areas and/or enrolled in any level course the opportunity to work at an approved career placement to gain valuable work experience while receiving CTAE course credit. A career placement (paid or non-paid) will be arranged by the WBL instructor or arranged by the student. WBL placements may also be a part of an academic course sequence and includes Mathematics, Science, Social Studies, English, Language Arts, Advanced Academics, World Languages, Fine Arts, JROTC, & CTAE.

## CTAE AT A GLANCE

### Programs Offered (Career Clusters)

- ✓ Agriculture, Food and Natural Resources
- ✓ Architecture and Construction
- ✓ Arts, A/V Technology, and Communications
- ✓ Business Management and Administration
- ✓ Education and Training
- ✓ Finance
- ✓ Government and Public Administration
- ✓ Health Science
- ✓ Hospitality and Tourism
- ✓ Human Services
- ✓ Information Technology
- ✓ Law, Public Safety, Corrections, and Security
- ✓ Marketing
- ✓ Science, Technology, Engineering, Mathematics (STEM)
- ✓ Transportation, Distribution, and Logistics

### Science, Technology, Engineering and Mathematics



Clayton County Public Schools also provides high quality educational opportunities in the science, technology, engineering, and mathematics (STEM) fields. STEM education is an integrated curriculum driven by problem solving, discovery, exploratory project-based learning, and student-centered development of ideas and solutions. In addition, STEAM is the integration of science, technology, engineering, and mathematics infused with meaningful arts integration.

### CTAE Career Academies, Magnet Programs and STEM Schools

Aviation & Innovation Career Academies:

- Morrow and North Clayton High Schools

Science, Technology & Mathematics Magnet Program:

- Morrow High School

Mathematics & Computer Science Magnet Program:

- Lovejoy High School

Certified Elementary & Middle School STEM Programs:

- Brown Elementary School
- Rex Mill Middle School

## Career Technical Student Organizations (CTSOs)

These organizations provide motivation, leadership training, and career development opportunities for students enrolled in CTAE programs in middle and high schools. CTSO's enhance student's occupational, employability and leadership skills through various activities such as conferences, award programs, service projects, and competitive events.

Teachers infuse the CTSO's activities into the instructional activities, thereby helping students see the real world value of their academic studies.

Health Occupations  
Students of America

Technology  
Student  
Association



SkillsUSA

Future Farmers  
of America

Future Business  
Leaders of America



Family, Career and  
Community Leaders  
of America

Distributive  
Education Clubs  
of America



### For more information about CTAE:

[www.clayton.k12.ga.us/departments/career\\_technical\\_and\\_agricultural\\_education](http://www.clayton.k12.ga.us/departments/career_technical_and_agricultural_education)