

SUMMER | 2017

facilities Construction

► ELITE SCHOLARS ACADEMY • PG. 1 & 2

► LEE STREET ELEMENTARY • PG. 3

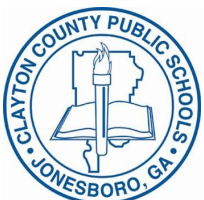
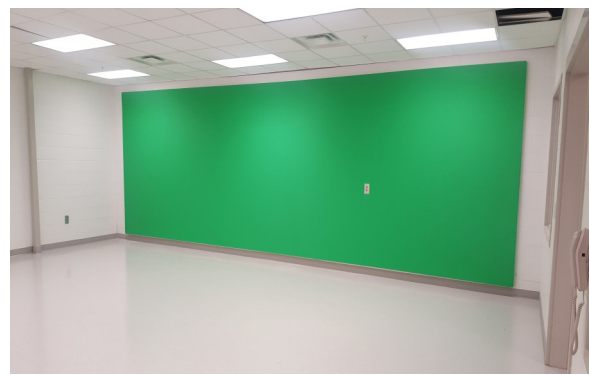
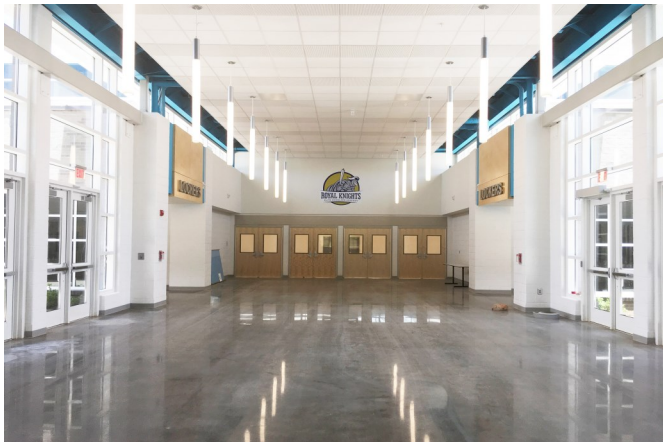
► RIVERDALE HS GYM • PG. 4

► EAST CLAYTON ELEMENTARY • PG. 5

Elite Scholars Academy Set for October Opening

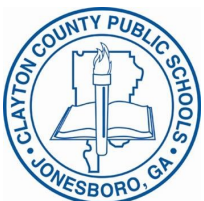
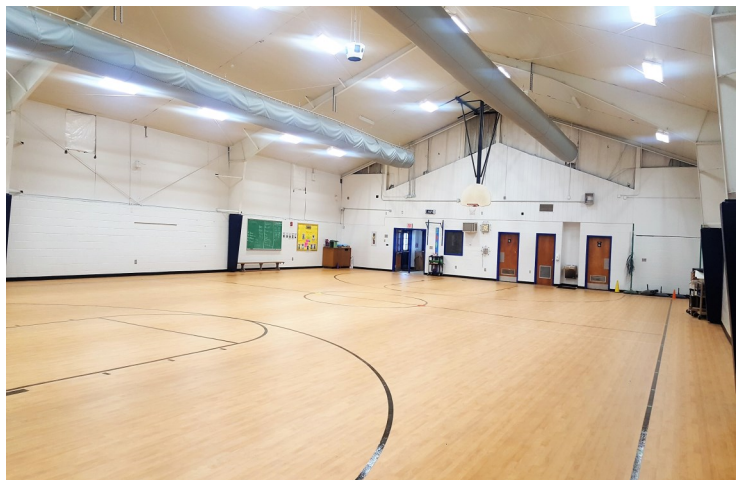
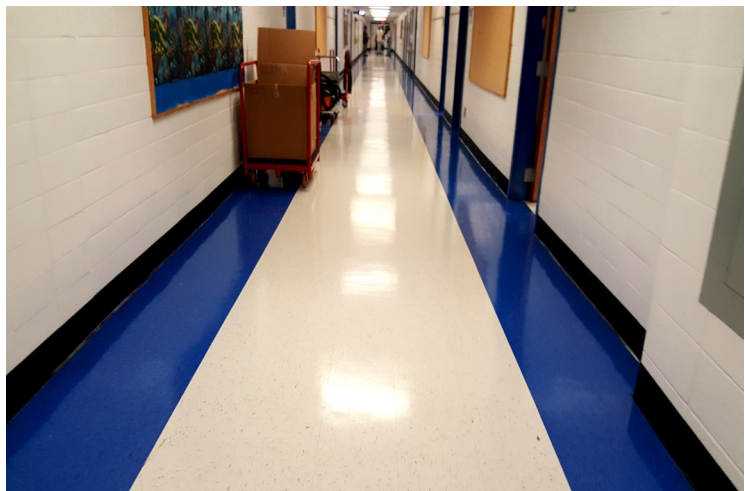


The construction of the New Elite Scholars Academy is now complete and ready to open in October of 2017. After eighteen months of construction, spanning over 128,000 square feet and sitting on 35 acres, the beautiful design and character of this new facility not only brings a great addition to Clayton County Public Schools but the City of Jonesboro as well. Sporting polished concrete floors, near 15 feet cloud ceilings and dark brick, architect Cooper Carry, have set a new trend in design on our facilities. Designed to provide education for 700 students, grades 6th through 12th, the school includes 29 classrooms, 7 science labs, 2 computer labs, 2 art rooms and band, orchestra & chorus rooms. Also, as an addition to CCPS, the school includes a innovative digital animation lab and green room. The new Elite Scholars Academy was constructed by J&R Construction and Development at \$22.8 million.



Lee Street Elementary

The renovation and modifications project of Lee Street Elementary is now complete and ready for students for the 2017-2018 school year. Students were welcomed back to their school with freshly painted walls, new playgrounds, as well as new floors and ceilings in their corridors. Also, included in the scope of work were new surveillance cameras, fire alarm, access control, grease trap, wheelchair lift and the addition of HVAC for the gym. Lee Street Elementary was renovated by Nix-Fowler Constructors and designed by BRPH Architects at \$3.386 million.



Riverdale High Gym



The new Riverdale High Competition Gym and Existing Gym Modifications reached a milestone this summer with the completion of the existing gym modifications portion of this project. In Riverdale High's original competition gym, there were major modifications, the original weight room has been converted into two health classrooms while the original lobby and concessions area has been converted into a new weight room with much more natural light. Within the gym itself, the scope included new paint, refinishing of the floor, installation of new lights and bleachers. Completion of Riverdale High's new competition gym is roughly two months away. All brick & block work, HVAC along with base binder for all drives are complete. The unique design of the new gym has peaked through with completion of the installation of the wall panels and curtain wall. The \$13.395 million was designed by Manley, Spangler, Smith Architects and is being constructed by Bowen & Watson, Inc.

East Clayton Elementary



East Clayton Elementary made great progress over the summer 2017. The shape of the new \$20.475 million facility is now fully seen with all structural steel and foundation work complete. With door frame installation, waterproofing and masonry near completion and brick work and window installation is on its way. Ductwork for HVAC and plumbing rough-ins have begun and made great headway with over half completed this summer throughout the building. The unique roof of the new replacement facility is moving forward as well with decking complete and base sheet installation ongoing. Perkins+Will's beautifully designed East Clayton Elementary will be complete in 2018.

Upcoming Projects

During the month of June, the Gardenwalk Transportation Fuel Facility was awarded at \$985,000 to Jimco Construction. While in July, the J.W. Arnold Elementary Renovation Project was awarded to Nix-Fowler Constructors at \$3.8 million. Both projects are slated to begin in the upcoming weeks.